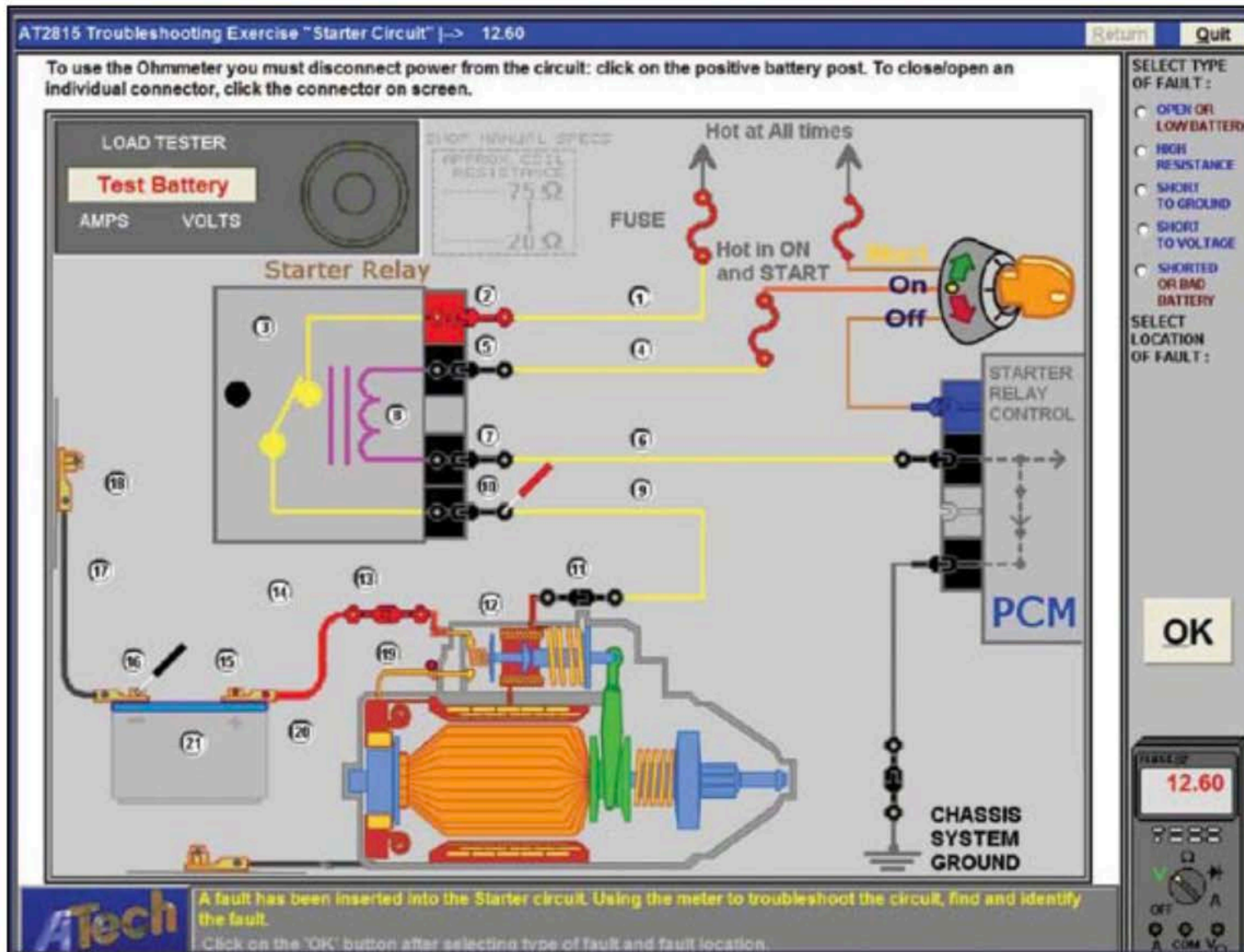


Starter System Troubleshooting (model 2815/2815N)



The Starter System Troubleshooting Trainer is a software program based on a Starting System and deals with the basic concepts of troubleshooting those automotive components. This program can operate in Random Mode, where the faults are selected randomly for each circuit chosen, or the instructor can select faults from various circuits to be activated as each student runs the program.

Features:

- Realistic operation of starter system.
- Built-in DVOM and Load Tester.
- Student performance is stored in Central Records or on a student USB drive as the student proceeds through the program.
- Instructor uses Instructor Management Program (IMP) to create student record, and assigns ID number and password for student login.
- Visual reinforcement of circuit behavior.
- Network Version Available - model 2815N

Activities Include:

- Troubleshooting section that can insert 47 possible faults into starting circuits for diagnosis in Training or Advance Mode.

CONTACT US