

# 1800 Series



## **Computer Based Programs**

The #1 provider of Engine Performance Trainers continues to develop innovative computer based simulation programs... ATECH's automotive fundamentals programs have harnessed the power of computers to enhance the learning experiences with animations of important concepts. Hands-on activities provide "need-to-know" reinforcement, while computer controlled diagnosis provides troubleshooting practice and competency testing.

## **Educationally Effective and Industry Proven**

Introduced in 1986 and used at hundreds of public and private schools, ATECH's Automotive Electricity and Electronic Program is designed specifically for automotive, autobody, and truck students. This very popular program also provides corporate training for Ford, Chrysler, Nissan, and Bosch technicians, as well as the U.S. Postal Service, the Navy, and many other industry organizations.

## **Student Record Keeping**

Both programs provide student record keeping. Each student is issued a unique I.D. number and password. The student's performance is recorded as the student proceeds through the program.

## **Classroom Management**

Each program includes the Instructor Management Program (IMP) Software and Manual. With menu selections from the IMP Program, the student record is initialized. Records can be accumulated either by a central record location on the network or by USB drive. The instructor can access the student records and insert faults for troubleshooting practice.

## **Operations Manual**

Each program includes an Operations Manual, containing instructions for the Computer/Software functions, as well as classroom management assistance.

## 1810W CBI Automotive Electricity

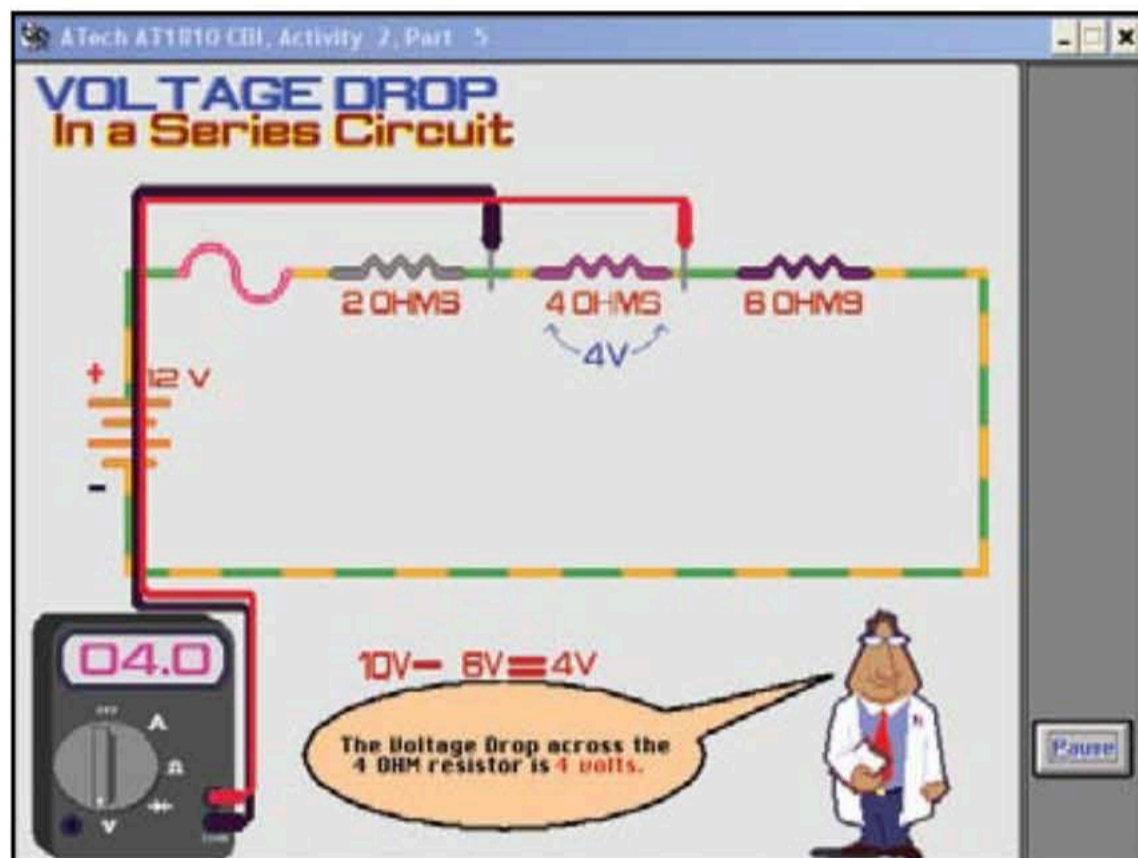
This program consists of sixteen student activities with over sixty animations—designed to present the fundamentals of automotive electricity.

### Activity List:

1. Electrical Components
2. Voltage & Voltmeter, Series Circuit, Current & Ammeter, Ohmmeter
3. Electrical Faults: Open, High Resistance & Short to Ground, Fault Troubleshooting
4. Ohm's Law: Parallel Circuit
5. Relay: Trunk Release Circuit, Test Light
6. Horn Circuit: Relay #2, Jumper Wire
7. Back-up Light Circuit, Switches, Resetting-type

### Circuit Breaker

8. Tail Light & Brake Light Circuit
9. Starter Motor Circuit
10. Turn Signal Circuit
11. Ignition Key Warning Circuit
12. Electric Cooling Fan Circuit
13. Brake Warning Circuit
14. Heater Blower Circuit
15. Head Light Circuit
16. Dome Light Circuit

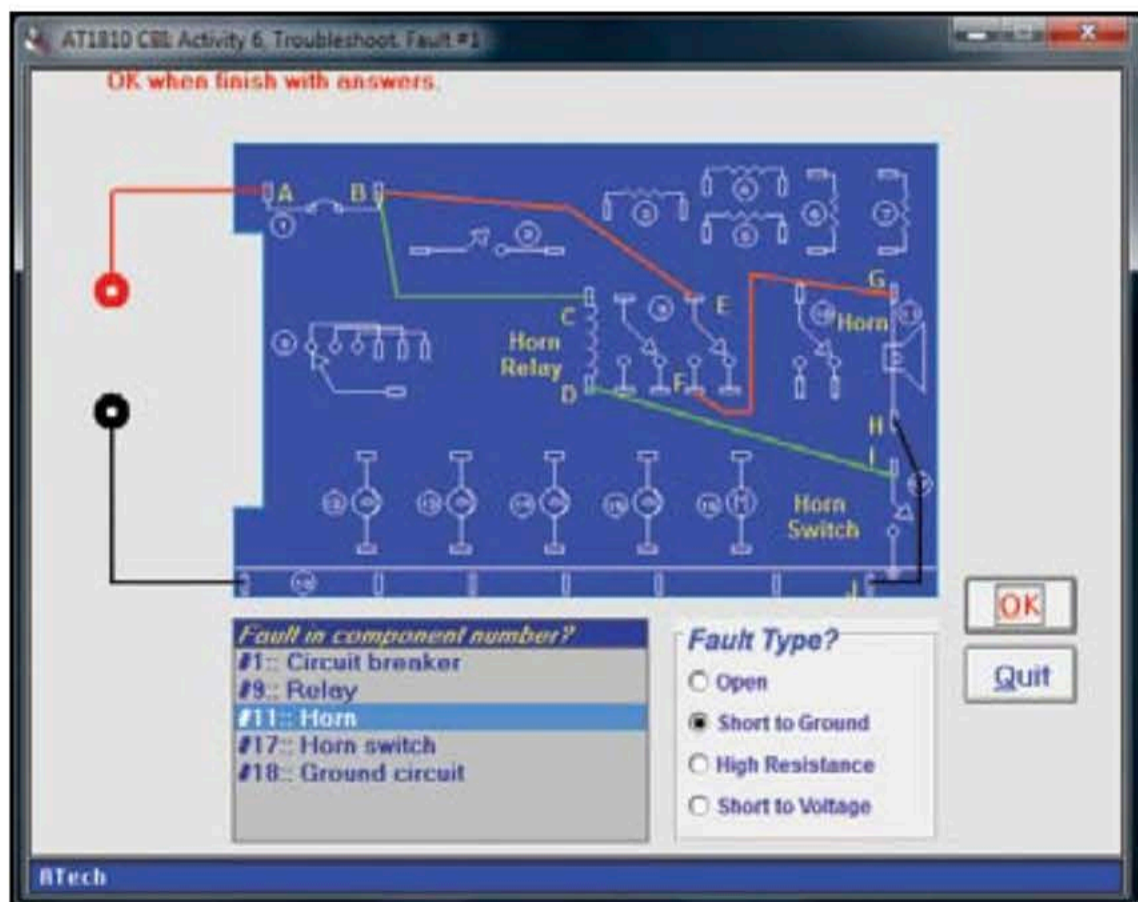


## 1820W CBI Automotive Electronics

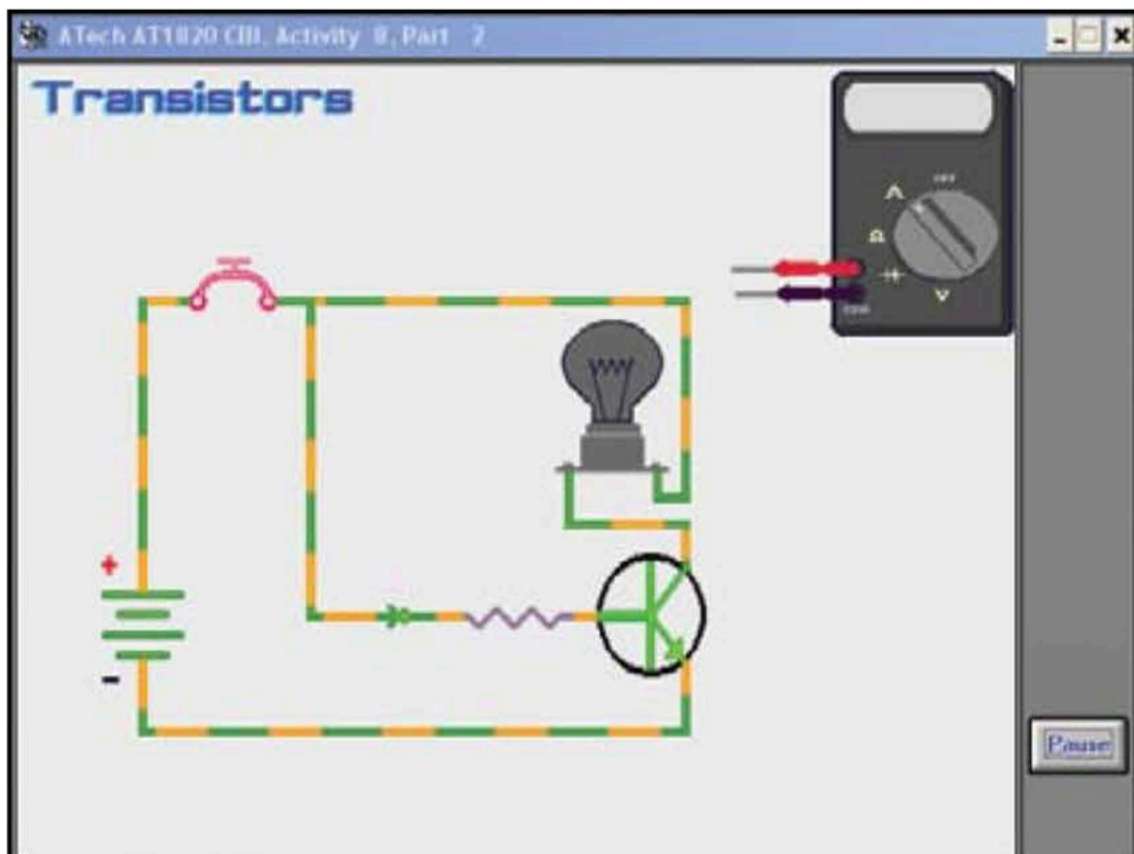
This program offers thirteen activities with over 40 instructional animations—each designed to present the fundamentals of automotive electronics.

### Activity List:

1. Introduction to Electronics
2. Digital Multimeter and Scientific Notation
3. Diode: P-N Junction, Turn-On Voltage
4. Direct Current (DC), Alternating Current (AC)
5. Light Emitting Diode
6. Induction and Clamping
7. Zener Diode and Voltage Regulation
8. Transistors: PNP/NPN, Rheostat
9. Transistor Troubleshooting
10. Amplification and Darlington Pair
11. Capacitors, Noise, and Filtering
12. Photoresistor
13. Combined Electronics



- Provides Troubleshooting Practice and Competency Testing
- Classroom Management with Remote Fault Insertion Capability
- Student Record Keeping with print outs.



**CONTACT US**